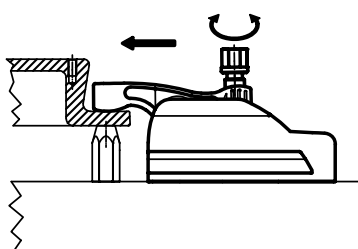
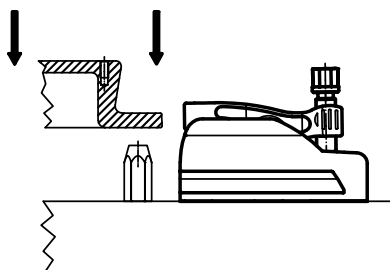


# Compact clamping claw with movable clamping lever



**ROEMHELD**  
HILMA ■ STARK



## Application:

- universal use on machined and unmachined workpieces
- any position is possible due to the self-locking clamping lever
- clamping and locking of dies and workpieces on injection moulding machines and machine tools

## Function:

1. move the clamping lever to the clamping point
2. clamp using the hexagonal collar screw
3. unclamp in the reverse order

## Mounting hints:

1. remove the ISO 4762-M6x10 stop screw
2. return the clamping lever and remove it
3. fasten the base body with 2 Allen screws (delivered with the clamping claw)
4. put the clamping lever into the guiding groove of the base body and insert it.
5. tighten the ISO 4762-M6x10 stop screw

## Special features:

- ◆ material: tempered steel, base body with black coating, clamping lever with silver-coloured coating
- ◆ precise, clamps true to position
- ◆ convenient, universal handling
- ◆ high clamping force with low tightening torque, wear-resistant due to the clamping lever provided with a slide bearing
- ◆ large, infinitely variable clamping range
- ◆ the clamping lever can be completely retracted into the housing to enable the unimpeded change of workpieces
- ◆ the clamping lever has a location thread for various clamping elements, e.g. ball pressure screws or pendulum supports
- ◆ large adjusting range with constant clamping force
- ◆ infinitely variable extension of the clamping range using a height adapter
- ◆ easy and flexible fastening options
- ◆ protected against corrosion
- ◆ resistant to dirt and swarf



## Compact clamping claw with movable clamping lever

### Compact clamping claw with movable clamping lever

Clamping force (kN)	15	25
Tightening torque (Nm)	45	75
d1 (mm)	M 12	M 16
T-slot nut for groove (mm)	14	18
d2 (mm)	M 8	M 12
SW (mm)	16	18
h1 min. (mm)	40	47
h1 max. (mm)	60	85
h2 (mm)	59	70
h3 (mm)	95	126
s max. (mm)	43	85
l1 (mm)	134	213
l2 +1 (mm)	70	120
l3 (mm)	50	50
l4 (mm)	13	17
l5 (mm)	10,0	12,5
b (mm)	45	55
Weight (kg)	1,85	4,34
<b>Part no.</b>	<b>8.2340.0100</b>	<b>8.2340.0200</b>

Scope of supply: Base body  
Clamping lever  
Fastening screws  
T-slot nuts

### Height adapters for compact clamping claw

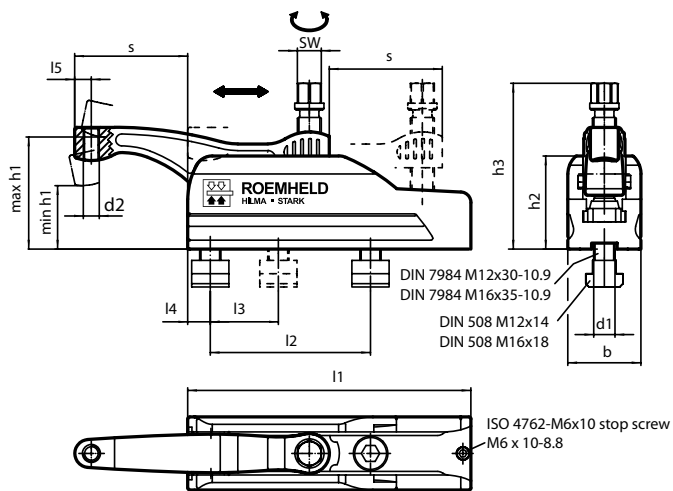
d1 (mm)	M 12	M16
l1 (mm)	134	213
l2 +1 (mm)	70	120
l3 (mm)	50	50
l4 (mm)	13	17
h (mm)	20	35
b1 (mm)	45	55
b2 H12 (mm)	14	18
Weight (kg)	0,72	2,6
<b>Part no.</b>	<b>8.2340.0001</b>	<b>8.2340.0002</b>

\* If using several height adapters, the fastening screws as per ISO 10642 and DIN 7984 respectively must be replaced by screws extended by dimension h

#### Please note:

The height adapters for the compact clamping claw allow the clamping range to be extended and have the following outstanding features:

- Infinitely variable extension of the clamping range
- The T-slot in the height adapter allows for exact positioning by moving the clamping claw at predefined grid spacings.



Base body made from tempered steel, black coating  
Clamping lever made from tempered steel, silver-coloured coating

