



Supply Units, Hand Panel and Foot Switch, Operating Panel, Mains Cable, Extension Cable for *modulog* modules



Application

Electronic supply and control unit for one *modulog* module and one hand panel or foot switch.

Note

The mains cable 230 VAC for power supply of the supply unit is not included in our delivery. The following items can be ordered separately as accessory.

Supply units with additional connections for external limit switches are available on request.

Material

Housing: Polycarbonate

Accessory mains cable 230 VAC

See page 4

Advantages

- Power supply and control in one device
- Socket connection for all devices to be connected
- Voltage supply 230 VAC
- Mains connection with safety plug
- Compact and sturdy version

Description

This supply unit is used for power supply and control of 1 *modulog* lifting module and one hand panel or operating panel, see page 3

The control is equipped with a setting mode that allows the operation of lifting units with different force steps and stroke lengths.

During the first start up, the setting mode has to be activated by the user. The control automatically adapts itself to the connected lifting unit.

The process in detail, see operating instructions. The control is suitable to operate lifting modules of different stroke lengths and force ranges. Therefore the control must be adapted to the connected lifting modules during the first start-up. For this purpose an automatic teaching process is integrated, that must be started by the user.

The **memory function** allows to store up to three height positions of the lifting module. These can be recalled again and again or newly stored. Thus ergonomically reasonable working heights can be obtained for different persons or different working heights within one assembly process can be determined. Operation is made via an operating panel that allows to store the height positions as well as to call them. Due to safety reasons a movement is always made by touch control.

modulog

Supply unit

for 1 *modulog* module with memory function

Part-no. 3821-XXX



Combinable with the modules

- Lifting modules as per data sheet M 4.XXX



Part numbers

Supply unit	Part-no.
- for 1 module	3821-246

Supply unit with memory function	Part-no.
- for 1 module	3821-411M

Technical characteristics

Dimensions:	200 x 120 x 100 mm
Supply power:	230 VAC, 50 cycles
Operating voltage:	24 VDC
Rating:	240 VA
Electronic current limitation:	10 A
Duty cycle:	15 % – 1.5 min On
Protection class:	II
Code class:	IP 66
Electrical connections:	Plug connection secured by screw

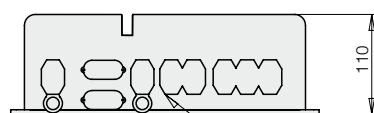
Fixing and installation

The supply unit is fixed with screws M6 at the external clips.

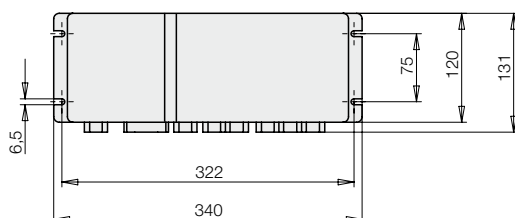
Mains cable, push-button and module are connected to the supply units with plug connections secured by screws.

Dimensions

for 1 module with memory function

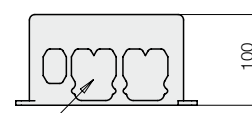


Ports for mains cable, control panel and modules

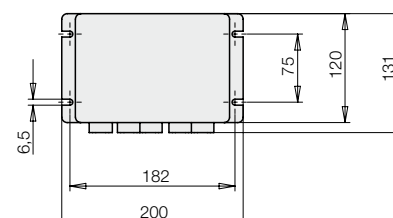


Dimensions

For 1 module



Ports for mains cable, control panel and module



Supply units for 2, 3 or 4 *modulog* modules with synchronization control and memory function



Advantages

- Power supply and control for 2, 3 or 4 *modulog* modules and one hand panel or foot switch in one device
- Simple start up of installations with modules with synchronization control
- Socket connection for all devices to be connected
- Voltage supply 230 VAC
- Simple mains connection with safety plug
- Compact design and sturdy version

modulog Supply unit

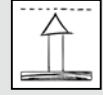
for 2, 3 or 4 *modulog* modules

Part-no. 3821-41XX



Combinable with the modules

- Lifting modules as per data sheet M 4.301



Description

This supply unit is used for power supply and control of alternatively 2, 3 or 4 *modulog* lifting modules and one hand panel or operating panel, see page 3.

The control is equipped with a setting mode that allows the operation of lifting units with different force steps and stroke lengths in synchronization control.

During the first start up, the setting mode has to be activated by the user.

The control automatically adapts itself to the connected lifting units.

The process in detail, see operating instructions: The synchronization control is suitable to operate lifting modules of different stroke lengths and force ranges. Therefore the synchronization control must be adapted to the connected lifting modules during the first start-up. For this purpose an automatic teaching process is integrated, that must be started by the user.

The **memory function** allows to store up to three height positions of the lifting modules. These can be recalled again and again or newly stored. Thus ergonomically reasonable working heights can be obtained for different persons or different working heights within one assembly process can be determined. Operation is made via an operating panel that allows to store the height positions as well as to call them. Due to safety reasons a movement is always made by touch control.

Part numbers

Supply unit	Part-no.
- for 2 modules	3821-412
- for 3 modules	3821-413
- for 4 modules	3821-414

Supply unit with memory function

Supply unit	Part-no.
- for 2 modules	3821-412M
- for 3 modules	3821-413M
- for 4 modules	3821-414M

Technical characteristics

Dimensions:	340 x 120 x 110 mm 200 x 120 x 100 mm
Supply power:	230 VAC, 50 cycles
Operating voltage:	24 VDC
Rating:	240/480 VA
(for 2, 3 or 4 modules)	
Electronic current limitation:	10 A
Duty cycle:	15% – 1.5 min On
Protection class:	II
Code class:	IP 66
Electrical connections:	Plug connection secured by screw

Fixing and installation

The supply unit is fixed with screws M6 at the external clips.

Mains cable, hand panel and modules are connected to the supply units with plug connections secured by screws.

Application

Electronic supply and control unit for 2, 3 or 4 *modulog* modules with synchronization control and one hand panel or foot switch.

Note

The mains cable 230 VAC for power supply of the supply unit is not included in our delivery. The following items can be ordered separately as accessory.

Supply units with additional connections for external limit switches are available on request.

Material

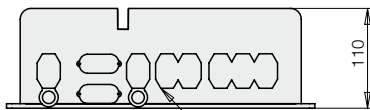
Housing: Polycarbonate

Accessory mains cable 230 VAC

See page 4

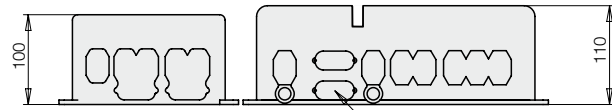
Dimensions

For 2 modules

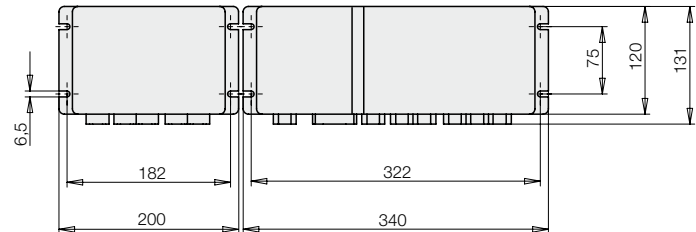
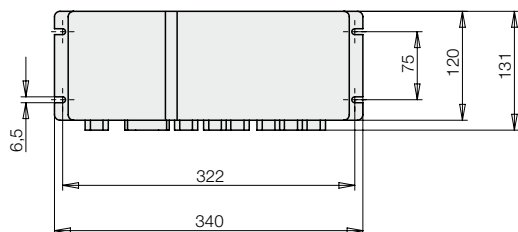


Ports for mains cable, control panel and modules

For 3 or 4 modules



Ports for mains cable, control panel and modules



Hand panel and operating panel for *modulog* modules



Application

Electrical hand panel for the operation of electrical *modulog* modules.

Advantages

- Comfortable operation
- Flexible positioning in an ergonomically favourable place
- Coiled cable
- Plug secured by screws

Description

The hand panel has two buttons which operate the functions “up” and “down”.

At the back of the body there is a hook to hang up the hand panel in an ergonomically favourable place.

The relaxed coiled cable is approx. 0.9 m long and can be pulled up to a length of 1.6 m.

Operation

Push the buttons “up” and “down” with the thumb by touch control.

When releasing a button the connected module stops immediately.

Material

Housing: Polycarbonate
Connecting cable: PUR

modulog Hand panel

Part-no. 3823-025



Combinable with the modules

- Lifting modules as per data sheet M 4.XXX



Technical characteristics

Dimensions: 56 x 130 x 23 mm
Code class: IP 66
Connecting cable: Coiled cable 1.6 m with plug

Installation

Voltage supply and control of the hand panel is made by a *modulog* supply unit.

The hand panel is ready for use after connection of the plug to the supply unit.



Application

Electrical operating panel for the operation of electrical *modulog* modules with memory function

Description

The operating panel is equipped with two push-buttons to adjust the lifting units and four push-buttons for the memory function. To store a position the lifting unit is moved to the desired position. Then, either push-button “M” and one of the positioning push-buttons “1”, “2” or “3” are operated at the same time or push-button “M” and soon after one of the positioning push-buttons. Later the lifting unit can be moved again to the stored position by means of the positioning push-buttons “1”, “2” or “3”. The stored positions are durably kept until they are overwritten by a new storage process.

Operation

Push the push-button “up”, “down”, “M”, “1”, “2” or “3” with your thumb in touch control mode.

Material

Housing: Polycarbonate
Connecting cable: PUR

modulog Operating panel

Part-no. 3823-109



Combinable with the modules

- Lifting modules as per data sheet M 4.XXX



Technical characteristics

Dimensions: 56 x 130 x 23 mm
Code class: IP 66
Connecting cable: Coiled cable 1.9 m with plug

Installation

Voltage supply and control of the operating panel is made by a *modulog* supply unit.

The operating panel is ready for use after connection of the plug to the supply unit.

Foot switch, mains cable and extension cable for *modulog* modules



Description

The foot switch is equipped with 2 push-buttons for the functions “up” and “down”. The bottom side is skid-proof so that also in industrial applications a fixed position can be guaranteed.

Operation

Push the push-buttons “up” and “down” with the foot by touch control. When releasing a push-button the connected module stops immediately.

Material

Housing: Polycarbonate
Connecting cable: PUR

Application

Electrical foot switch for the operation of electrical *modulog* modules.

modulog

Foot switch



Part-no. 3823-038

Combinable with the modules

- Lifting module as per data sheet M 4.XXX



Technical characteristics

Dimensions:	109 x 209 x 38 mm
Code class:	IP 65
Connecting cable:	Smooth cable 3.0 m with plug

Installation

Voltage supply and control of the foot switch is made by a *modulog* supply unit.

The foot switch is ready for use after connection of the plug to the supply unit.

Accessories

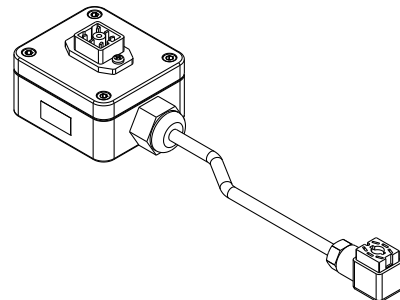
Mains cable - smooth

Cable version:	smooth
Supply voltage:	230 VAC
Length:	3.0 m
Material of isolation:	PUR
Part-no.	3823-040



Extension cable

Cable version:	smooth	smooth	smooth
Supply voltage:	24 VDC	24 VDC	24 VDC
Length:	5 m	8 m	10 m
Material of isolation:	PVC	PVC	PVC
Part-no.	3823-175L050	3823-175L080	3823-175L100



To connect the lifting module to the control and the hand panel or foot switch to the control.